

CLERMONT COUNTY, OHIO



LINDA L. FRALEY, AUDITOR

2006 THIRD QUARTER REPORT



Linda L. Fraley

Clermont County Auditor

To: Elected Officials

From: Linda L. Fraley, Auditor

RE: 2006 Third Quarter Financial Report

Date: October 17, 2006

I am pleased to present you with a 2006 3rd Quarter Financial Report on the County's revenues and expenditures. This report is to provide accurate and timely financial information on a quarterly basis to the elected officials.

General Fund Revenues

General Fund revenues have increased by 8.1% for the period ended September 30, 2006 as compared to the same period last year. Below is a summary of the increases and decreases in revenue:

- The County's property tax increased by \$916,923 (13.4%) due to the 2005 triennial.
- Charges for Services increased by \$651,797 (7.3%) due to a 1 mill increase in the conveyance fee.
- Interest income increased by \$1,004,313 (50.9%) due to a higher return on our investments.
- Fines & Forfeitures decreased by \$113,612 (21.4%) due to a \$100,000 bond forfeiture received in 2005.
- Other Financing Sources increased in the amount of \$707,887 due to a reimbursement received on an insurance claim for Clermont Transportation Connection and reimbursement from the County's contract with the Economic Development Corporation in January 2006.

General Fund Expenditures

General Fund expenditures have increased by \$8,777,934 (22.7%) as compared to third quarter last year. Here is a summary of the increases and decreases in expenditures as budgeted.

- Economic Development had an increase of \$8,465,875 due to a land purchase in the amount of \$8,023,230, and \$294,000 to the Economic Development Corporation of Clermont County.
- Transfers decreased because transfers for replacement and improvement to the capital project funds have not been requested as of September 30, 2006.

- Veterans Commission increased by \$138,891 due to an increase in public assistance.

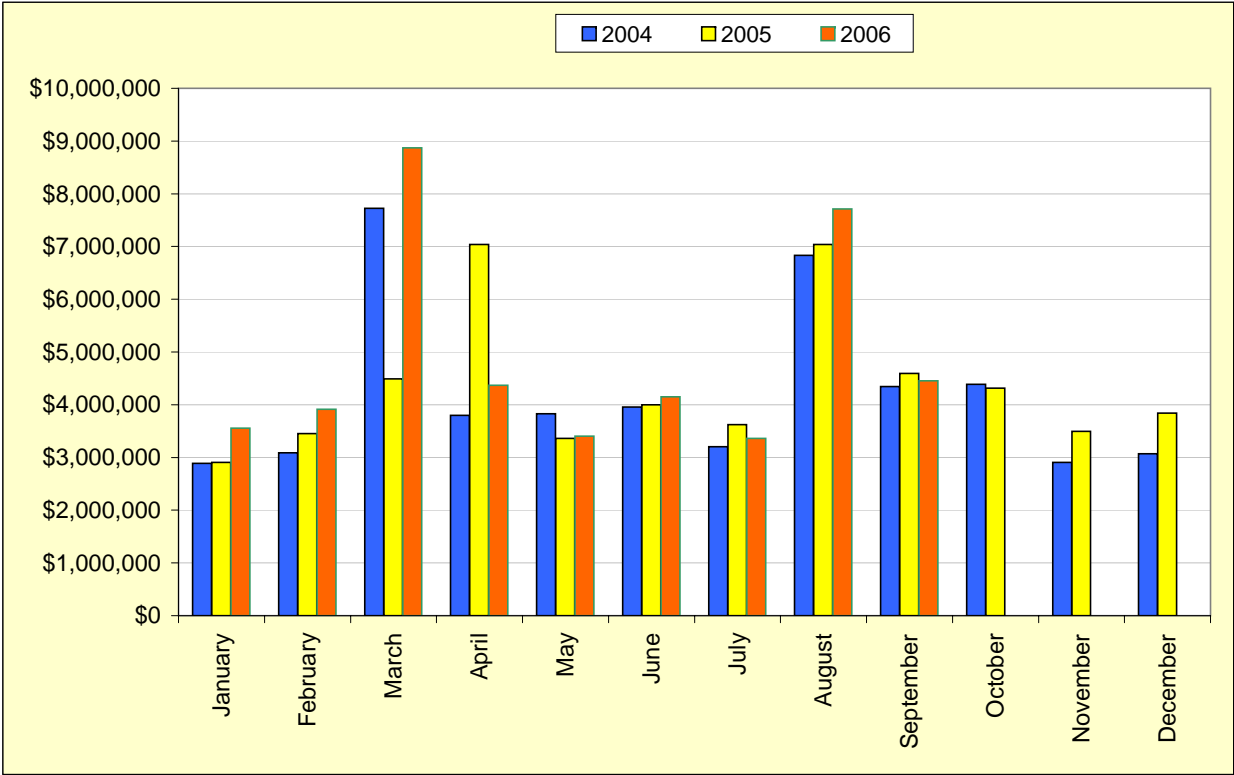
In Summary

- Our year-to-date revenues have increased by 8.1% compared to the same period in 2005.
- Our year-to-date expenditures have increased by 22.7% compared to the same period in 2005.
- As of September 30, 2006, we have expended \$3,656,342 more than we have received.

As always we will continue to monitor Clermont County's finances and economy and its impact on the County. Should you have any questions or concerns please do not hesitate to contact me.

General Fund Revenue Analysis For the Last Three Years

	2004	2005	2006
January	\$ 2,886,904	\$ 2,905,122	\$ 3,555,760
February	3,089,872	3,454,816	3,913,968
March	7,724,186	4,489,103	8,872,920
April	3,801,065	7,036,154	4,366,198
May	3,829,097	3,361,878	3,404,095
June	3,957,195	3,996,085	4,153,441
July	3,203,303	3,625,202	3,359,574
August	6,830,069	7,040,428	7,715,405
September	4,346,770	4,595,942	4,455,251
October	4,387,530	4,315,072	
November	2,909,318	3,497,090	
December	3,067,787	3,840,086	
Y-T-D	\$ 50,033,096	\$ 52,156,978	\$ 43,796,612
Jan-Sept Comparison	\$ 39,668,461	\$ 40,504,730	\$ 43,796,612
Percent of Change		2.1%	8.1%



**GENERAL FUND
ANALYSIS OF 2006 MONTHLY REVENUES**

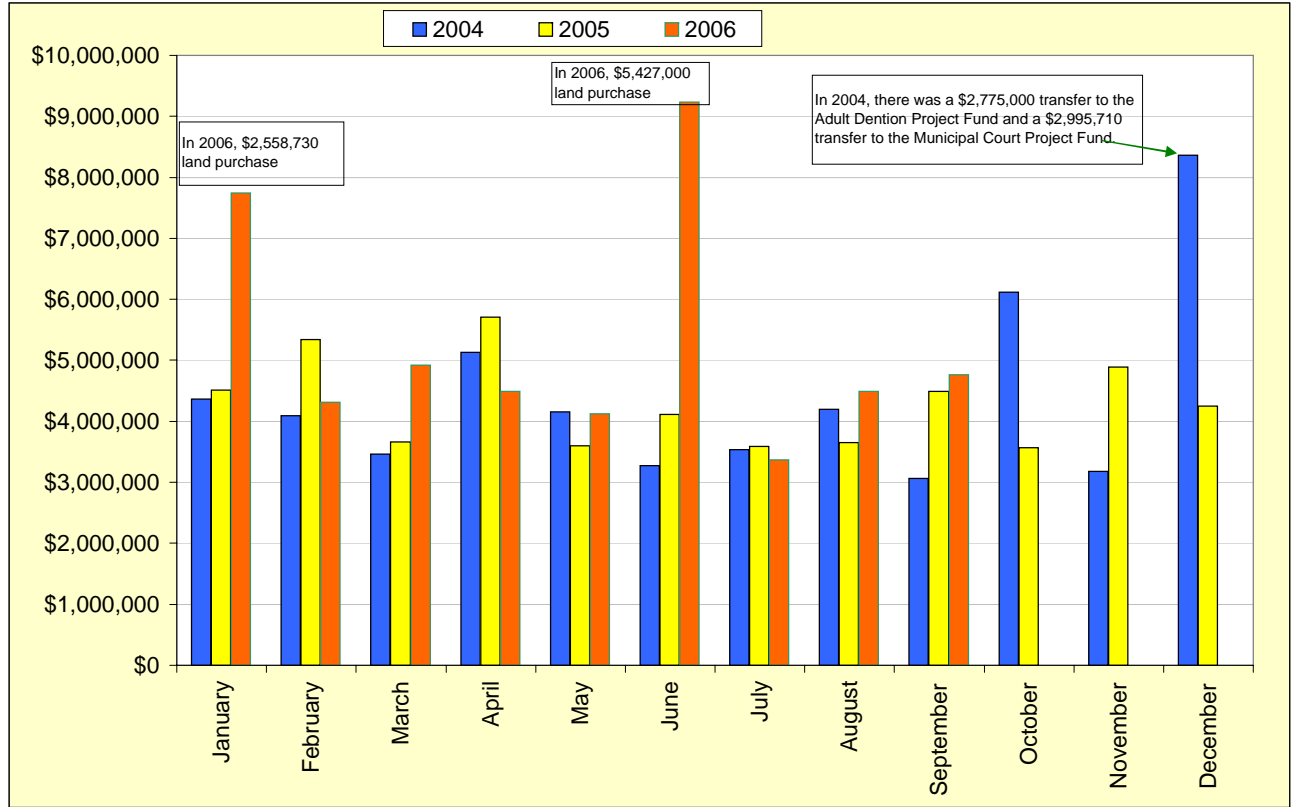
	January	February	March	April	May	June	July	August	September	2006 Totals	2005 Totals	Percent of Change
Property Taxes	\$0	\$0	\$ 4,034,698	\$ 25,778	\$ 29,433	\$ 15,438	\$0	\$ 3,641,788	\$ 22,803	\$ 7,769,938	\$ 6,853,015	13.4%
Sales Tax	1,532,602	1,755,023	2,052,174	1,757,899	1,586,772	1,682,138	1,780,458	1,671,401	1,906,508	15,724,975	15,542,231	1.2%
Charges for Services	561,638	1,190,239	1,692,042	1,149,076	848,679	1,170,122	736,616	1,414,138	817,745	9,580,295	8,928,498	7.3%
Licenses and Permits	108,648	109,584	137,886	153,772	137,550	124,204	104,845	99,695	87,266	1,063,450	1,352,983	-21.4%
Fines & Forfeitures	107,948	108,064	128,626	99,461	110,854	121,109	114,422	110,994	103,620	1,005,098	1,118,710	-10.2%
Intergovernmental	244,261	438,776	526,882	607,203	319,331	331,826	185,528	232,198	1,003,705	3,889,710	3,857,888	0.8%
Interest Income	331,524	252,209	242,260	370,735	315,138	459,770	331,231	283,260	401,190	2,987,317	1,983,004	50.6%
Other Revenue*	48,688	55,674	49,853	47,854	53,682	65,879	48,554	162,321	58,705	591,210	391,669	50.9%
Other Financing Sources**	620,451	4,399	8,499	154,420	2,656	182,955	57,920	99,610	53,709	1,184,619	476,732	148.5%
Totals \$	3,555,760	3,913,968	8,872,920	4,366,198	3,404,095	4,153,441	3,359,574	7,715,405	4,455,251	43,796,612	40,504,730	8.1%

* Other Revenue includes Leases, Donations, Witness Fees, Jury Duty and Insurance Claims

** Other Financing Sources includes operating transfers, advances, proceeds from sale of fixed assets, and reimbursements

General Fund Expenditures Analysis For the Last Three Years

	2004	2005	2006
January	\$ 4,360,353	\$ 4,512,989	\$ 7,740,159
February	4,096,597	5,338,437	4,308,475
March	3,461,585	3,662,558	4,924,049
April	5,133,346	5,708,561	4,495,735
May	4,160,122	3,600,262	4,125,365
June	3,275,249	4,112,512	9,235,360
July	3,539,792	3,593,492	3,369,035
August	4,199,181	3,654,035	4,487,289
September	3,068,149	4,492,174	4,767,487
October	6,113,160	3,567,023	
November	3,182,511	4,893,799	
December	8,359,900	4,254,573	
Y-T-D	\$ 52,949,945	\$ 51,390,415	\$ 47,452,954
Jan-Sept Comparison	\$ 35,294,374	\$ 38,675,020	\$ 47,452,954
Percent of Change		9.6%	22.7%



Expenditures include disbursement on prior year purchase orders

EXPENDITURES OF GENERAL FUND DEPARTMENTS

DEPARTMENT	JANUARY	FEBRUARY	MARCH	APRIL	MAY	JUNE	JULY	AUGUST	SEPTEMBER	TOTAL TO DATE	2006 TOTAL TO DATE	2005 TOTAL TO DATE	CHANGE IN DOLLARS	CHANGE IN PERCENT
BOARD OF COUNTY COMMISSIONERS	\$ 94,177	\$ 81,237	\$ 113,688	\$ 71,865	\$ 85,130	\$ 70,306	64,675	69,519	98,120	\$ 748,717	\$748,140	\$577	0.08%	
HUMAN RESOURCES DEPARTMENT	22,432	21,908	31,948	22,708	21,319	22,660	21,195	21,216	30,179	215,565	223,048	(7,483)	-3.35%	
INSURANCE/HEALTH/JUDGMENTS	610,200	894	9,573	2,740	16,259	1,209	6,623	5,269	2,180	654,947	788,788	(133,841)	-16.97%	
FACILITIES MANAGEMENT	149,268	67,543	437,833	97,861	408,431	344,467	64,334	222,250	206,067	1,998,054	1,793,940	204,114	11.38%	
CAPITAL EXPENDITURES - GEN FND	17,660	74,537	72,809	35,524	276,920	77,591	29,434	148,737	62,916	796,128	1,208,739	(412,611)	-34.14%	
RECORDS RETENTION	13,011	11,876	19,908	21,066	17,808	13,181	26,510	13,389	13,485	150,234	137,603	12,631	9.18%	
L&E GRANTS/TRANSFERS/ADVANCES	137,156	0	69,292	100,381	69,971	0	79,766	55,490	2,110	514,166	968,616	(454,450)	-46.92%	
AUDITOR - GENERAL OFFICE	104,369	101,128	170,153	101,858	94,166	100,408	97,022	116,981	129,107	1,015,192	1,100,092	(84,900)	-7.72%	
BUDGET COMMISSION	0	0	322	0	322	0	0	0	0	644	533	111	20.83%	
BOARD OF REVISION	0	0	615	0	22	1,243	510	1,300	651	4,341	2,145	2,196	102.38%	
BUREAU OF INSPECTION - AUDIT	50	2,316	5,844	5,753	20,573	25,111	27,723	0	11,186	98,556	83,531	15,025	17.99%	
TREASURER	65,574	69,794	56,834	46,619	41,881	67,349	41,788	53,267	58,668	501,774	524,120	(22,346)	-4.26%	
PROSECUTING ATTORNEY	217,358	182,234	262,096	182,732	184,051	191,012	186,583	179,030	271,866	1,856,962	1,765,101	91,861	5.20%	
BOARD OF ELECTIONS	40,167	40,509	62,325	54,594	161,847	106,543	41,689	38,207	92,703	638,584	814,765	(176,181)	-21.62%	
RECORDER	32,888	37,440	53,879	35,426	35,236	35,767	35,951	35,653	49,384	351,624	343,598	8,026	2.34%	
OFFICE OF MGT AND BUDGET	21,551	20,816	30,175	22,198	22,115	19,283	23,365	24,880	32,334	216,717	204,285	12,432	6.09%	
INFORMATION SYSTEMS DIVISION	163,600	126,605	179,707	161,612	127,779	138,171	125,287	132,589	190,452	1,345,802	1,568,422	(222,620)	-14.19% ¹	
ADMIN BLDG MAILROOM	1,472	5,988	2,501	6,947	2,347	3,380	1,723	6,362	3,805	34,525	31,540	2,985	9.46%	
BCC PUBLIC INFORMATION	17,804	14,386	20,568	14,521	13,624	16,244	14,627	15,058	21,137	147,969	139,022	8,947	6.44%	
ECONOMIC DEVELOPMENT	2,593,105	392,044	28,464	23,856	104,787	5,506,400	29,911	70,332	126,533	8,875,432	238,970	8,636,462	3614.04%	
L&E NON-RECURRING	130,309	240,422	16,228	16,106	30,675	23,768	24,603	516,459	16,358	1,014,928	0	1,014,928	100.00% ¹	
COURT OF APPEALS	0	0	0	0	0	0	143,960	0	0	143,960	137,962	5,998	0.00%	
JUDICIAL GRANTS/TRANSFERS/ADV	80,000	0	0	0	0	0	0	47,787	0	127,787	467,145	(339,358)	-72.65%	
COMMON PLEAS COURT	86,037	86,954	106,293	85,485	74,151	82,505	66,989	78,356	113,873	780,643	763,593	17,050	2.23%	
JURY COMMISSION	13,513	14,885	19,151	14,383	15,899	13,318	13,489	14,649	20,492	139,779	130,933	8,846	6.76%	
LAW LIBRARY	11,383	11,343	16,301	11,343	11,343	11,674	11,339	11,339	16,298	112,363	107,886	4,477	4.15%	
DOMESTIC RELATIONS COURT	74,579	73,367	100,587	69,877	73,989	74,716	69,568	69,703	106,134	712,520	695,798	16,722	2.40%	
JUVENILE COURT	90,912	94,274	153,142	103,785	106,206	104,277	90,445	117,117	150,441	1,010,599	921,242	89,357	9.70%	
PROBATE COURT	26,658	25,372	37,246	26,515	28,313	32,360	25,380	26,176	37,437	265,457	254,869	10,588	4.15%	
CLERK OF COMMON PLEAS COURTS	64,253	79,871	94,603	77,683	78,029	73,014	61,582	86,495	106,834	722,364	699,634	22,730	3.25%	
CLERK MUNICIPAL COURT	139,733	113,204	133,071	92,446	95,444	96,472	101,628	95,722	145,277	1,012,997	941,384	71,613	7.61%	
PUBLIC DEFENDER	91,036	87,578	127,910	88,223	88,512	93,340	88,598	89,969	135,271	890,437	809,649	80,788	9.98%	
MUNICIPAL COURT	87,089	73,727	104,499	74,019	71,437	75,094	73,484	74,131	104,636	738,116	706,155	31,961	4.53%	
DUI COURT	6,810	5,523	8,809	9,210	6,076	7,350	8,556	5,964	17,826	76,124	27,468	48,656	177.14%	
JUDICIAL NON-RECURRING	0	0	0	0	0	0	0	0	0	0	0	0	0.00%	
COMMUNICATIONS CENTER	550,099	294,142	160,094	174,690	111,395	112,939	116,953	116,943	159,964	1,797,219	1,736,458	60,761	3.50%	
BUILDING INSPECTION	63,068	69,226	102,341	69,556	69,349	70,009	62,749	70,172	93,735	670,205	626,078	44,127	7.05%	
PERMIT CENTRAL	20,157	20,681	28,324	19,355	30,863	19,916	19,557	19,893	29,094	207,840	203,914	3,926	1.93%	
PUBLIC SAFETY GRANTS	76,666	299,244	32,524	656,559	3,276	1,805	25,204	47,768	1,275	1,144,321	1,357,901	(213,580)	-15.73%	
COUNTY CORONER	22,661	19,853	29,909	26,542	21,203	21,428	17,874	30,670	28,123	218,263	202,508	15,755	7.78%	
COMMON PLEAS ADULT PROBATION	69,646	68,530	90,063	64,581	64,063	69,241	63,693	68,777	93,411	652,005	617,035	34,970	5.67%	
JUVENILE DETENTION	98,813	96,814	136,710	97,021	94,001	115,494	94,388	97,616	128,529	959,386	872,547	86,839	9.95%	
YOUTH AND COMM PARTNERSHIP	250	0	0	64	0	98	0	0	0	412	29,210	(28,798)	-98.59%	
JUVENILE PROBATION	30,042	31,139	45,238	30,869	31,326	33,055	30,795	28,337	42,582	303,383	296,001	7,382	2.49%	
SHERIFF ADMINISTRATION	1,199,425	1,075,536	1,539,734	1,067,348	1,131,862	1,184,703	1,069,216	1,115,243	1,538,528	10,921,595	10,878,869	42,726	0.39%	
MUNI.COURT ADULT PROBATION	45,722	51,466	71,178	45,013	43,788	45,146	45,066	48,194	69,462	465,035	463,156	1,879	0.41%	
PUBLIC SAFETY NON-RECURRING	20,400	0	0	0	0	0	0	30,956	0	51,356	0	51,356	100.00%	
TB CLINIC	20,758	0	0	0	0	20,758	0	0	0	41,516	41,516	0	0.00%	
OTHER HEALTH	10,329	12,506	10,002	31,822	18,617	0	10,681	5,819	15,345	115,121	110,083	5,038	4.58%	
HUMAN SERVICES GRANTS	226,347	18,779	0	438,115	0	0	0	240,875	0	924,116	1,044,373	(120,257)	-11.51%	
HUMAN SERVICES NON-RECURRING	0	0	0	0	0	0	0	0	0	0	0	0	0.00%	
VETERANS SERVICE COMMISSION	60,506	69,997	92,711	68,992	94,126	92,774	91,402	97,827	159,157	827,492	688,601	138,891	20.17%	
DEPT OF COMM PLANNING & DEVEL	21,116	21,962	38,847	27,872	26,834	19,781	23,120	24,803	34,522	238,857	157,117	81,740	52.02%	
PLANNING COMMISSION	0	825	0	0	0	0	0	0	0	825	937	(112)	-11.95%	
REPORT TOTAL	\$ 7,740,159	\$ 4,308,475	\$ 4,924,049	\$ 4,495,735	\$ 4,125,365	\$ 9,235,360	\$ 3,369,035	\$ 4,487,289	\$ 4,767,487	\$ 47,452,954	\$ 38,675,020	\$ 8,777,934	22.70%	

See memo for explanation of any expenditures that changed \$100,000 and 20%

¹ In 2005 the Microsoft software licenses were purchased out of Information Systems Department.

GENERAL FUND EXPENDITURES COMPARED TO APPROPRIATIONS

2004

DEPT	FINAL APPROPRIATION	YEAR TO DATE EXPENDITURES	ENCUMBRANCES OUTSTANDING AS OF 9/30/06	PERCENT EXPENDED/ ENCUMBERED
BOARD OF COUNTY COMMISSIONERS	\$ 976,669	\$ 887,948		90.9%
HUMAN RESOURCES DEPARTMENT	336,813	273,797		81.3%
INSURANCE/HEALTH/JUDGMENTS	1,726,186	1,663,268		96.4%
FACILITIES MANAGEMENT	2,425,611	2,268,961		93.5%
CAPITAL EXPENDITURES - GEN FND	4,727,504	4,552,453	10,569	96.5%
RECORDS RETENTION	167,159	159,415	351	95.6%
L&E GRANTS/TRANSFERS/ADVANCES	2,238,601	1,915,326	24	85.6%
AUDITOR	1,584,357	1,380,875		87.2%
BUDGET COMMISSION	1,400	1,400		100.0%
BOARD OF REVISION	5,000	2,729		54.6%
BUREAU OF INSPECTION - AUDIT	103,290	103,249		100.0%
TREASURER	714,925	670,890		93.8%
PROSECUTING ATTORNEY	2,349,535	2,281,227		97.1%
BOARD OF ELECTIONS	1,089,707	1,024,511		94.0%
RECORDER	454,661	438,792		96.5%
OFFICE OF MGT AND BUDGET	326,934	269,610		82.5%
INFORMATION SYSTEMS DIVISION	1,873,960	1,669,949		89.1%
ADMIN BLDG MAILROOM	43,006	37,359		86.9%
BCC PUBLIC INFORMATION	178,994	168,223		94.0%
ECONOMIC DEVELOPMENT	612,274	427,045		69.7%
L&E NON-RECURRING				
COURT OF APPEALS	130,000	101,536		78.1%
JUDICIAL GRANTS/TRANSFERS/ADV	482,698	432,698		89.6%
COMMON PLEAS COURT	999,630	969,586		97.0%
JURY COMMISSION	198,553	166,773		84.0%
LAW LIBRARY	138,873	136,674		98.4%
DOMESTIC RELATIONS COURT	897,690	863,518		96.2%
JUVENILE COURT	1,296,999	1,240,692		95.7%
PROBATE COURT	334,021	331,545		99.3%
CLERK OF COMMON PLEAS COURTS	948,694	898,258		94.7%
CLERK MUNICIPAL COURT	1,256,280	1,198,120		95.4%
PUBLIC DEFENDER	911,961	890,447		97.6%
MUNICIPAL COURT	929,783	915,173	35	98.4%
DUI COURT				
JUDICIAL NON-RECURRING				
DITCH MAINTENANCE	2,500	-		0.0%
COMMUNICATIONS CENTER	2,630,902	2,370,765	565	90.1%
BUILDING INSPECTION	858,796	800,603		93.2%
PERMIT CENTRAL	286,064	274,796		96.1%
PUBLIC SAFETY GRANTS	1,423,021	1,410,424		99.1%
COUNTY CORONER	257,523	255,770		99.3%
COMMON PLEAS ADULT PROBATION	758,790	725,078		95.6%
JUVENILE DETENTION	956,154	945,454		98.9%
YOUTH AND COMM PARTNERSHIP				
JUVENILE PROBATION	392,374	377,421		96.2%
SHERIFF	13,575,142	13,429,290		98.9%
MUNI.COURT ADULT PROBATION	660,228	658,916	10	99.8%
PUBLIC SAFETY NON-RECURRING				
TB CLINIC	43,700	43,700		100.0%
OTHER HEALTH	300,000	111,931		37.3%
HUMAN SERVICES GRANTS	1,966,144	1,874,691		95.3%
VETERANS SERVICE COMMISSION	1,021,312	909,873		89.1%
HUMAN SERVICES NON-RECURRING				
DEPT OF COMM PLANNING & DEVEL	290,146	247,761		85.4%
PLANNING COMMISSION	2,800	1,351		48.3%
REPORT TOTAL	\$ 55,887,364	\$ 52,779,871	\$ 11,554	94.5%

(Continued)

This report is on a budgetary basis. Expenditures based on a prior year purchase order are included in the year the purchase order is dated.

GENERAL FUND EXPENDITURES COMPARED TO APPROPRIATIONS

2005

DEPT	AMENDED APPROPRIATION	YEAR TO DATE EXPENDITURES	ENCUMBRANCES OUTSTANDING AS OF 9/30/06	PERCENT EXPENDED/ ENCUMBERED
BOARD OF COUNTY COMMISSIONERS	\$ 1,007,005	\$ 957,903	\$ 8,624	96.0%
HUMAN RESOURCES DEPARTMENT	346,462	289,409	173	83.6%
INSURANCE/HEALTH/JUDGMENTS	1,413,246	1,368,083	-	96.8%
FACILITIES MANAGEMENT	2,633,889	2,556,092	38,860	98.5%
CAPITAL EXPENDITURES - GEN FND	2,060,648	1,716,614	5,221	83.6%
RECORDS RETENTION	170,687	168,152	-	98.5%
L&E GRANTS/TRANSFERS/ADVANCES	1,492,008	1,286,008	13,067	87.1%
AUDITOR	1,527,790	1,419,714	110	92.9%
BUDGET COMMISSION	1,400	1,333	-	95.2%
BOARD OF REVISION	5,000	2,482	-	49.6%
BUREAU OF INSPECTION - AUDIT	92,682	83,683	-	90.3%
TREASURER	727,325	637,607	37,462	92.8%
PROSECUTING ATTORNEY	2,407,064	2,289,867	2,918	95.3%
BOARD OF ELECTIONS	1,236,174	1,199,075	992	97.1%
RECORDER	496,888	444,332	2,598	89.9%
OFFICE OF MGT AND BUDGET	315,616	278,826	6	88.3%
INFORMATION SYSTEMS DIVISION	2,179,364	1,994,961	9,643	92.0%
ADMIN BLDG MAILROOM	44,962	40,524	245	90.7%
BCC PUBLIC INFORMATION	198,182	185,363	-	93.5%
ECONOMIC DEVELOPMENT	8,812,053	2,831,798	-	32.1%
L&E NON-RECURRING				
COURT OF APPEALS	137,962	137,962	-	100.0%
JUDICIAL GRANTS/TRANSFERS/ADV	864,832	837,375	-	96.8%
COMMON PLEAS COURT	1,001,741	997,035	-	99.5%
JURY COMMISSION	178,510	172,815	-	96.8%
LAW LIBRARY	142,299	140,488	-	98.7%
DOMESTIC RELATIONS COURT	944,685	910,316	-	96.4%
JUVENILE COURT	1,305,527	1,231,413	3,848	94.6%
PROBATE COURT	343,370	337,002	65	98.2%
CLERK OF COMMON PLEAS COURTS	953,182	919,907	166	96.5%
CLERK MUNICIPAL COURT	1,260,062	1,223,724	6,610	97.6%
PUBLIC DEFENDER	1,084,262	1,079,454	847	99.6%
MUNICIPAL COURT	932,034	918,274	312	98.6%
DUI COURT	102,352	46,506	-	45.4%
JUDICIAL NON-RECURRING				
DITCH MAINTENANCE	2,500	-	-	0.0%
COMMUNICATIONS CENTER	2,381,706	2,089,528	23,100	88.7%
BUILDING INSPECTION	885,602	810,574	3,298	91.9%
PERMIT CENTRAL	289,063	256,693	2,184	89.6%
PUBLIC SAFETY GRANTS	1,627,283	1,623,221	3,000	99.9%
COUNTY CORONER	262,997	257,398	-	97.9%
COMMON PLEAS ADULT PROBATION	840,743	793,215	-	94.3%
JUVENILE DETENTION	1,177,018	1,159,483	8,552	99.2%
YOUTH AND COMM PARTNERSHIP	96,470	35,948	-	37.3%
JUVENILE PROBATION	402,437	386,694	984	96.3%
SHERIFF	14,320,372	14,229,718	13,988	99.5%
MUNI.COURT ADULT PROBATION	652,630	607,554	144	93.1%
PUBLIC SAFETY NON-RECURRING				
TB CLINIC	41,516	41,516	-	100.0%
OTHER HEALTH	300,000	143,569	-	47.9%
HUMAN SERVICES GRANTS	1,411,769	1,343,712	-	95.2%
VETERANS SERVICE COMMISSION	1,106,521	923,773	-	83.5%
HUMAN SERVICES NON-RECURRING				
DEPT OF COMM PLANNING & DEVEL	334,028	233,708	1,369	70.4%
PLANNING COMMISSION	4,350	825	-	19.0%
REPORT TOTAL	\$ 62,556,268	\$ 53,641,226	\$ 188,386	86.0%

(Continued)

This report is on a budgetary basis. Expenditures based on a prior year purchase order are included in the year the purchase order is dated.

**GENERAL FUND EXPENDITURES COMPARED TO APPROPRIATIONS
2006**

DESC	ORIGINAL APPROPRIATION	APPROPRIATION	YEAR TO DATE EXPENDITURES	YEAR TO DATE ENCUMBRANCES AS OF 9/30/06	PERCENT EXPENDED
BOARD OF COUNTY COMMISSIONERS	\$ 1,019,099	\$ 1,019,099	\$ 731,561	\$ 36,232	71.79%
HUMAN RESOURCES DEPARTMENT	288,113	288,113	213,662	3,983	74.16%
INSURANCE/HEALTH/JUDGMENTS	681,000	681,000	639,898	15,608	93.96%
FACILITIES MANAGEMENT	2,767,317	2,792,243	1,969,960	520,148	70.55%
CAPITAL EXPENDITURES - GEN FND	828,750	862,568	657,450	66,038	76.22%
RECORDS RETENTION	191,369	191,369	141,367	18,278	73.87%
L&E GRANTS/TRANSFERS/ADVANCES	819,688	765,852	490,915	120,013	64.10%
AUDITOR	1,390,176	1,391,786	1,010,762	17,729	72.62%
BUDGET COMMISSION	1,400	1,400	644	456	46.00%
BOARD OF REVISION	5,000	5,000	4,341	0	86.82%
BUREAU OF INSPECTION - AUDIT	92,682	99,600	98,557	0	98.95%
TREASURER	754,119	754,119	498,290	48,356	66.08%
PROSECUTING ATTORNEY	2,433,864	2,472,881	1,849,208	33,338	74.78%
BOARD OF ELECTIONS	1,148,197	1,148,197	638,235	17,308	55.59%
RECORDER	519,868	518,779	349,664	6,698	67.40%
OFFICE OF MGT AND BUDGET	327,532	327,532	215,438	9,719	65.78%
INFORMATION SYSTEMS DIVISION	1,884,597	1,944,866	1,271,284	136,666	65.37%
ADMIN BLDG MAILROOM	44,962	44,962	34,331	5,291	76.36%
BCC PUBLIC INFORMATION	197,527	197,527	142,238	3,624	72.01%
ECONOMIC DEVELOPMENT	764,077	6,632,831	6,468,639	68,806	97.52%
L&E NON-RECURRING	2,346,290	2,380,700	1,014,929	2,665	42.63%
COURT OF APPEALS	149,962	149,962	143,960	0	96.00%
JUDICIAL GRANTS/TRANSFERS/ADV	139,218	139,218	127,787	0	91.79%
COMMON PLEAS COURT	1,029,463	1,030,715	771,936	2,968	74.89%
JURY COMMISSION	190,497	190,497	139,120	0	73.03%
LAW LIBRARY	147,925	147,925	112,323	0	75.93%
DOMESTIC RELATIONS COURT	979,364	979,364	710,339	3,443	72.53%
JUVENILE COURT	1,343,358	1,343,358	991,817	2,797	73.83%
PROBATE COURT	355,074	355,074	263,531	225	74.22%
CLERK OF COMMON PLEAS COURTS	970,676	970,676	716,661	39,271	73.83%
CLERK MUNICIPAL COURT	1,295,682	1,358,656	1,007,707	35,860	74.17%
PUBLIC DEFENDER	1,169,449	1,198,292	889,358	11,014	74.22%
MUNICIPAL COURT	966,195	972,533	732,867	10,203	75.36%
DUI COURT	109,014	119,914	76,124	7,500	63.48%
JUDICIAL NON-RECURRING	389,900	385,718	0	0	0.00%
DITCH MAINTENANCE	2,500	2,500	0	0	0.00%
COMMUNICATIONS CENTER	2,462,453	2,398,771	1,730,795	133,455	72.15%
BUILDING INSPECTION	996,671	996,671	658,350	54,219	66.05%
PERMIT CENTRAL	285,540	285,540	203,882	2,969	71.40%
PUBLIC SAFETY GRANTS	1,554,276	1,582,938	1,144,320	6,651	72.29%
COUNTY CORONER	268,270	267,228	197,798	24,574	74.02%
COMMON PLEAS ADULT PROBATION	866,962	866,962	647,800	758	74.72%
JUVENILE DETENTION	1,289,932	1,289,932	944,547	8,150	73.22%
YOUTH AND COMM PARTNERSHIP	24,118	24,118	413	0	1.71%
JUVENILE PROBATION	407,014	407,014	301,379	424	74.05%
SHERIFF ADMINISTRATION	14,598,892	14,624,589	10,797,283	403,119	73.83%
MUNI.COURT ADULT PROBATION	679,333	679,333	464,005	2,133	68.30%
PUBLIC SAFETY NON-RECURRING	543,320	515,942	51,356	0	9.95%
TB CLINIC	41,516	41,516	41,516	0	100.00%
OTHER HEALTH	300,000	300,000	92,286	192,906	30.76%
HUMAN SERVICES GRANTS	1,182,651	1,182,651	924,116	0	78.14%
VETERANS SERVICE COMMISSION	1,128,066	1,128,066	827,492	711	73.35%
HUMAN SERVICES NON-RECURRING	97,600	97,600	0	0	0.00%
DEPT OF COMM PLANNING & DEVEL	368,135	368,135	231,616	4,823	62.92%
PLANNING COMMISSION	4,350	4,350	825	825	18.97%
REPORT TOTAL	\$ 54,843,003	\$ 60,926,182	\$ 44,384,682	\$ 2,079,954	72.85%

Percent expended is over 80% in 2006.

This report is on a budgetary basis. Expenditures based on a prior year purchase order are included in the year the purchase order is dated.

In 2006 the licenses were purchased by the Legislative & Executive Non-Recurring Department